

Masport[®] Heating

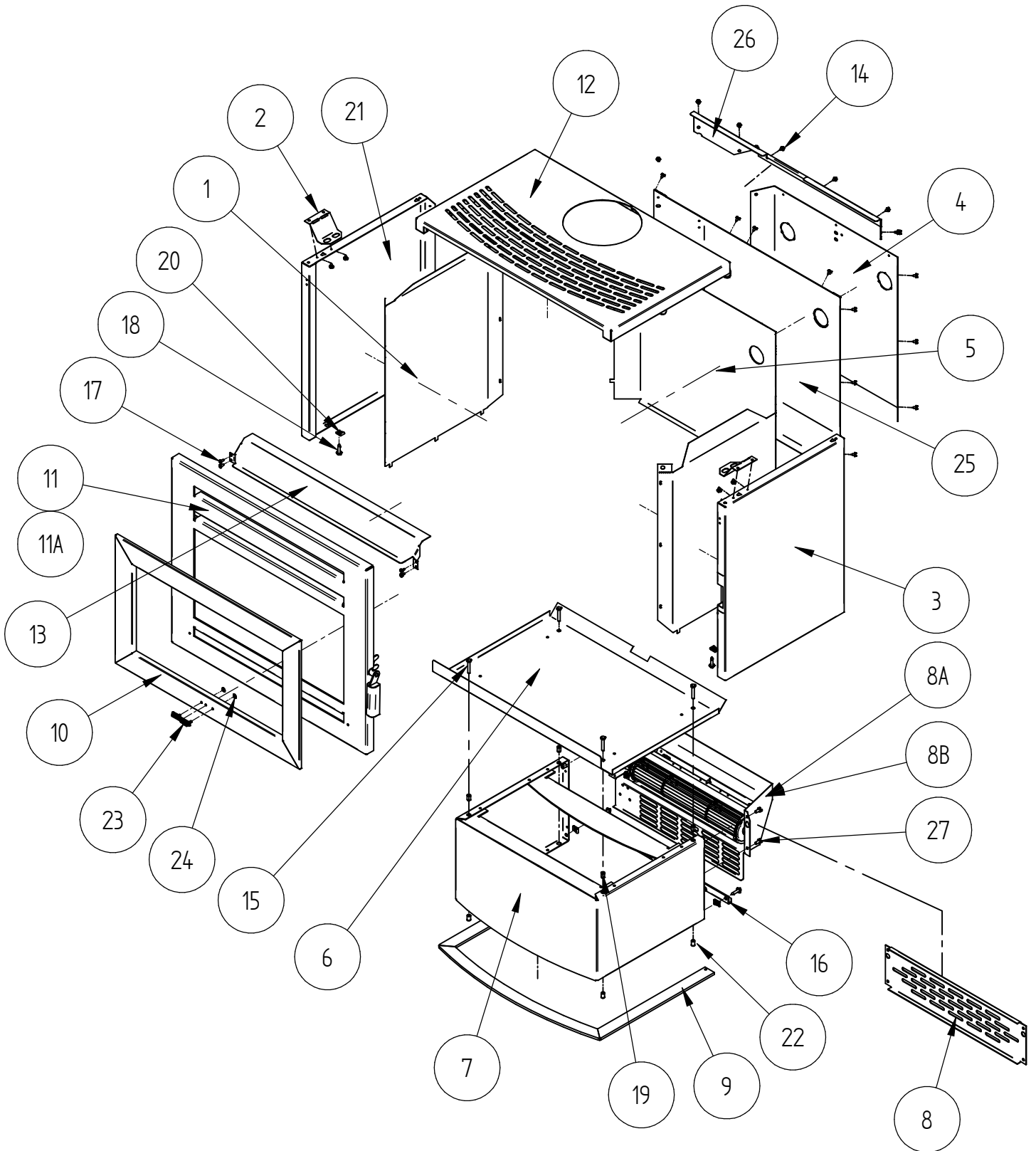
FREESTANDING WOOD FIRES

F7000 - AUSTRALIA

Item No.	MARKET	FUEL TYPE	FINISH	YEAR	FAN
993902	AU	HARDWOOD	Charcoal VHT - Charcoal VHT	May-2009	Optional
993903			Matt Black Enamel - Titanium VHT		
993904			Charcoal VHT - Charcoal VHT	Mar-2009	Yes
993905			Matt Black Enamel - Titanium VHT		



PANELS, DOOR AND PEDESTAL

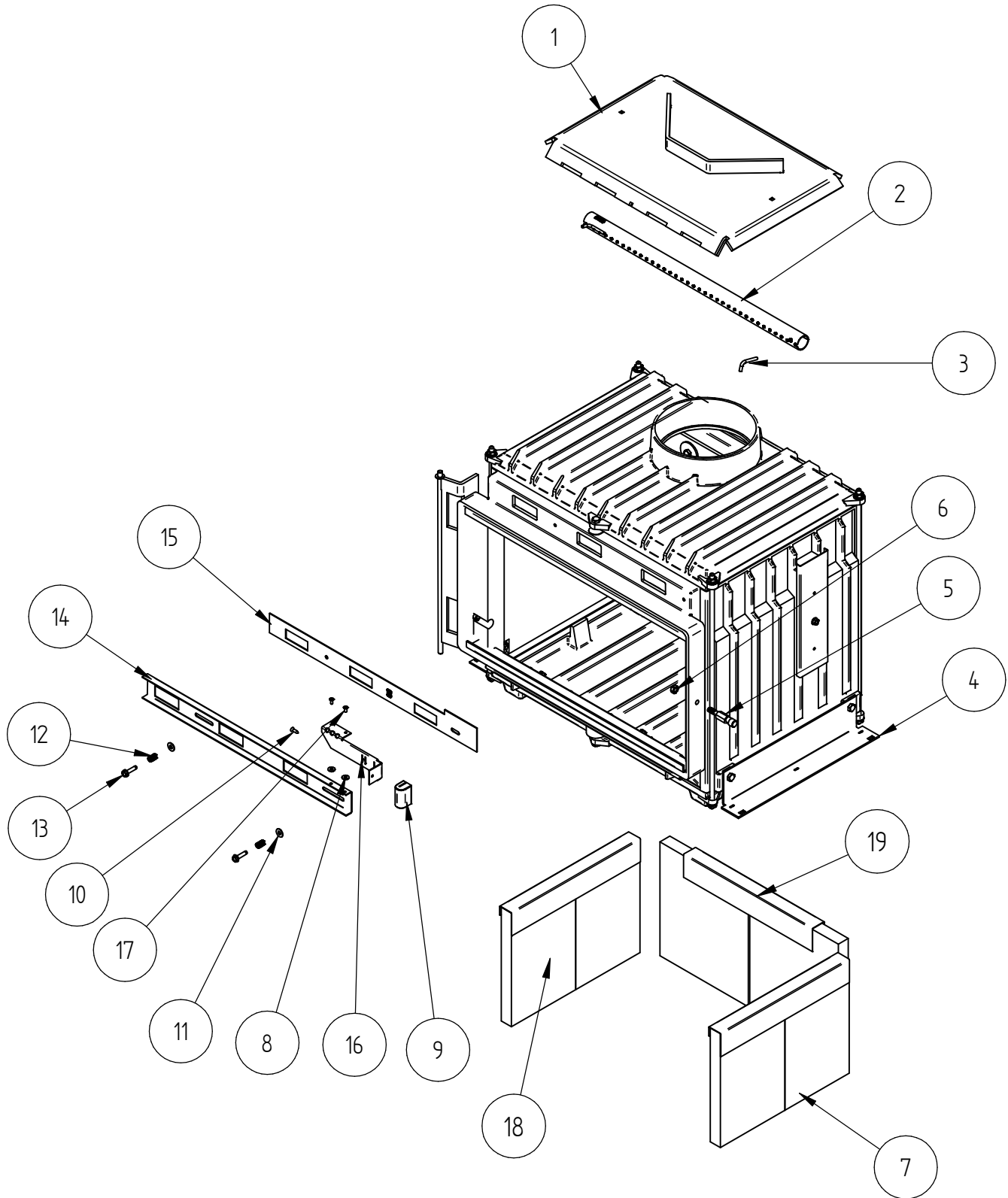


When ordering PLEASE QUOTE PART ID along with Finish Suffix (if applicable)

PANELS, DOOR AND PEDESTAL							
ITEM	Part ID	Models				Descriptions	Qty
		993902	993903	993904	993905		
1	993433	-	-	-	-	F7000 HEATSHIELD SIDE	2
2	993457	-	-	-	-	F7000 BRACE - SIDE PANEL	2
3	993470	V05	E01	V05	E01	F7000 SIDE PANEL RH	1
4	993468	V05	P01	V05	P01	PANEL-AIR DEFL. REAR, BTM F7	1
5	993434	-	-	-	-	F7000 REAR HEATSHIELD	1
6	993428	-	-	-	-	F7000 HEATSHIELD - BOTTOM	1
7	993471	V05	P02	V05	P02	PED ASSY-CURVED F7000	1
8	993480	V05	P02	NA	NA	PANEL PEDESTAL BACK FAN	1
8A	994791	NA	NA	P02	P02	FAN ASS'Y COMPL F3/F7 FER GAS BLK PC	1
8B	594160	-	-	NA	NA	FAN 3SP, F3000/ F7000 PKD (AFMC)	1
9	993483	V05	P02	V05	P02	F7000 FOOT ASSEMBLY	1
10	993448	V05	V04	V05	V04	TRIM-DOOR, ASSY. F7000	1
11	993453	V05	NA	V05	NA	SEE DOOR ASSEMBLY PAGE	1
11A	993477	NA	E01	NA	E01	SEE DOOR ASSEMBLY PAGE	1
12	993443	V05	E01	V05	E01	PANEL TOP - ASSY, F7000	1
13	993439	V02	V02	V02	V02	F7000 DEFLECTOR PANEL	1
14	521635	-	-	-	-	SCREW, S/T 10GX3/8" HEX FLANGE BLK	27
15	521060	-	-	-	-	SCREW, M6X35 HEX ZP	4
16	995612	-	-	-	-	BRACKET - SE IS RESTRAINT GVIEW	1
17	521645	-	-	-	-	SCREW, S/T 8GX1/2" MUSH FLANGE POZI BLK	6
18	521637	-	-	-	-	SCREW, S/T 12GX25 TIMBERTITE	6
19	522605	-	-	-	-	NUT, RIVNUT STD/FLANGE M6	4
20	522402	-	-	-	-	NUT, SPIRE SNU0537	6
21	993469	V05	E01	V05	E01	F7000 SIDE PANEL LH	1
22	522606	-	-	-	-	NUT, RIVNUT STD/FLANGE M8 9858-5821	4
23	587836	-	-	-	-	BADGE MASPORT HEATING	1
24	526001	-	-	-	-	CLIP, STARLOCK 4 DIA SLP04	2
25	993466	V05	P01	V05	P01	PANEL-REAR F7000	1
26	993476	V05	P01	V05	P01	PANEL-AIR DEFL. REAR, TOP	1
27	521009	-	-	-	-	SCREW; M6X12 HEX ZP	4

When ordering PLEASE QUOTE PART ID along with Finish Suffix (if applicable)

AIRSLIDE, BAFFLE, BRICKS AND FIREBOX

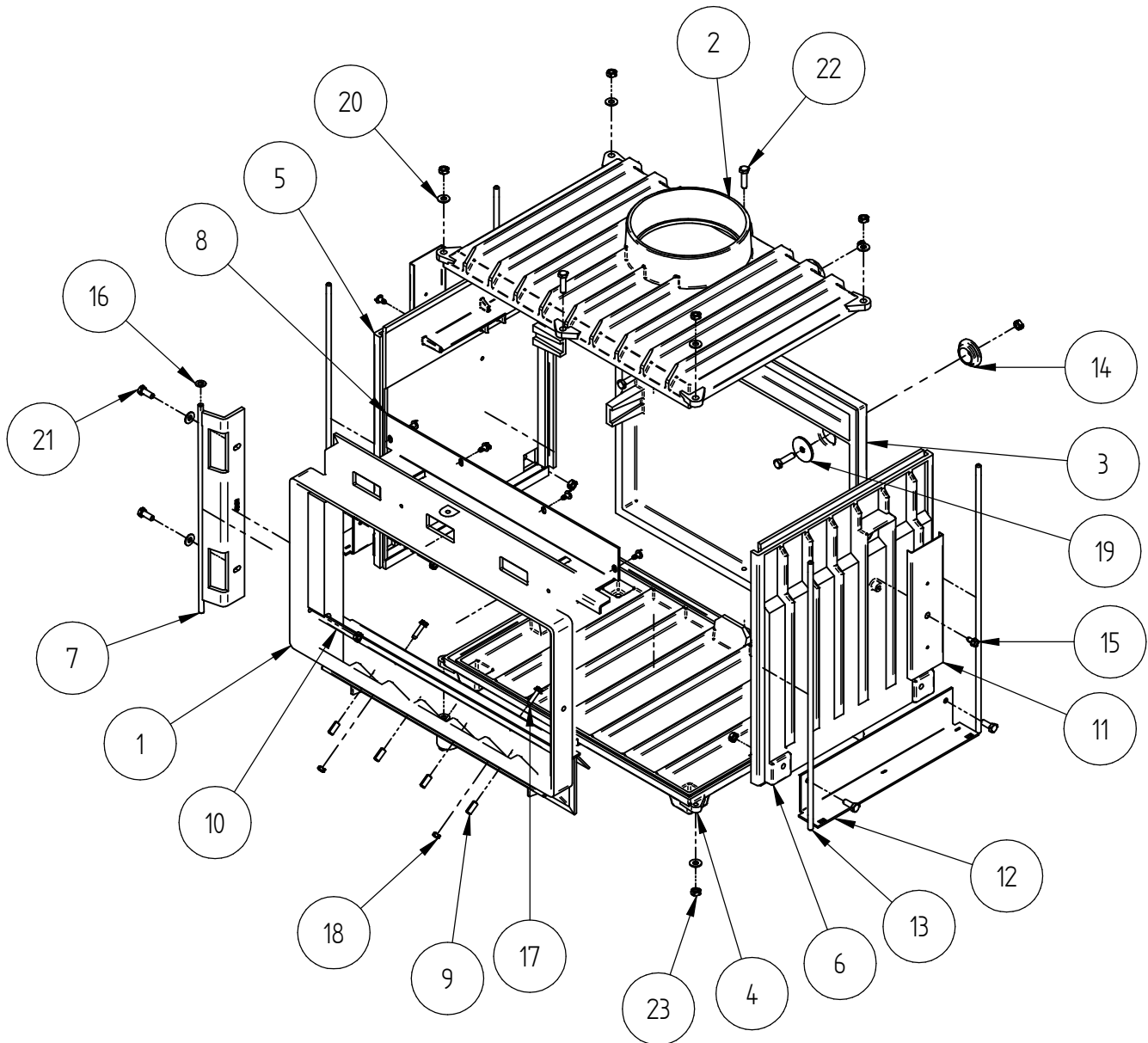


When ordering PLEASE QUOTE PART ID along with Finish Suffix (if applicable)

AIRSLIDE, BAFFLE, BRICKS AND FIREBOX							
ITEM	Part ID	Models				Descriptions	Qty
		993902	993903	993904	993905		
1	993436	V02	V02	V02	V02	BAFFLE ASSY STL F7000	1
2	993440	-	-	-	-	TUBE-SEC AIR,65X3.5 LE7/T0 S/S	1
3	586439	-	-	-	-	PIN-RETAINING SEC' AIR TUBE	1
4	993425	-	-	-	-	F/B ASSY F7000	1
5	593481	-	-	-	-	PIN-DOOR LATCH LE7000 BZP	1
6	522118	-	-	-	-	NUT; HEX STD M8 ZP	1
7	587112	-	-	-	-	BRICK-FIREBOX BACK	2
8	523000	-	-	-	-	WASHER; FLAT 3/16"X1/2"X18G ZP	2
9	586162	-	-	-	-	KNOB-AIR CONTROL WOODFIRE	1
10	521628	-	-	-	-	SCREW; S/T 8GX5/8" CSK POZI ZP	1
11	523007	-	-	-	-	WASHER; FLAT 1/4"X5/8"X0.049" ZP	2
12	585223	-	-	-	-	SPRING-COMPRESSION AIR INLET	2
13	521633	-	-	-	-	SCREW; S/T M6X25 HEX FLANGE TAPTITE	2
14	993438	-	-	-	-	F7000 AIRSLIDE	1
15	993459	-	-	-	-	F7000 PLATE - METERING 'F7' I.D. HOLES	1
16	993451	-	-	-	-	F7000 & F2000 EXTENSION - AIRSLIDE	1
17	524011	-	-	-	-	RIVET; 73 MS 5-3	2
18	587145	-	-	-	-	BRICK-FIREBOX SIDE	4
19	987146	-	-	-	-	CHANNEL - BRICK RETAINER LE7000	3

When ordering PLEASE QUOTE PART ID along with Finish Suffix (if applicable)

FIREBOX DETAILS

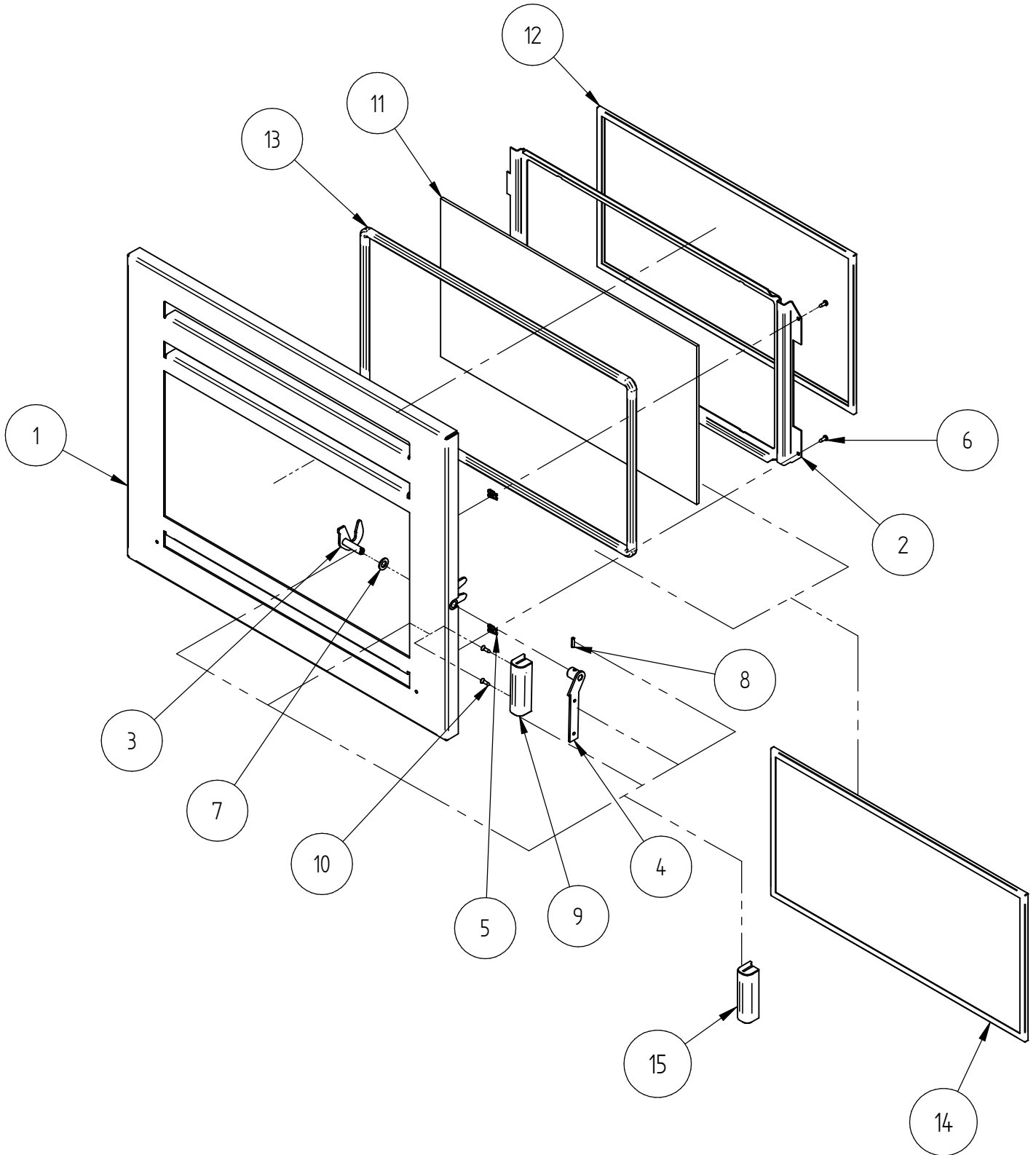


When ordering PLEASE QUOTE PART ID along with Finish Suffix (if applicable)

FIREBOX: 993425							
Item	Part ID	Models				Title	Qty
		993902	993903	993904	993905		
1	695558	-	-	-	-	F/B FRONT GRANDVIEW	1
2	695544	-	-	-	-	FIREBOX TOP GRANVIEW	1
3	687103	-	-	-	-	F/B BACK LE7&PR/CLRDO/GDVW/TOR	1
4	687104	-	-	-	-	F/B BOTTOM LE7/CLRDO/GNDVW/TOR	1
5	687100	-	-	-	-	F/B SIDE LH LE7&PROV/CLRDO/TOR	1
6	687107	-	-	-	-	F/B SIDE RH LE7&PROV/CLRDO/TOR	1
7	993455	-	-	-	-	HINGE ASSY F7000	1
8	993479	-	-	-	-	DEFLECTOR ASSY- PRIMARY AIR F7000	1
9	525007	-	-	-	-	PIN; TENSION 8X20 BLK BISSELL 001791	4
10	986723	-	-	-	-	PLARE - BASE INNER F7000/ I-9000	1
11	986146	-	-	-	-	COVER - SECONDARY AIR	2
12	993467	-	-	-	-	F7000 PANEL BRACKET	2
13	587108	-	-	-	-	ROD; TIE M8X 505	4
14	684089	-	-	-	-	PLUG, 34DIAPITTS/FATS0/WFIRE	2
15	521601	-	-	-	-	SCREW; S/T 1/4"X1/2" HEX FLANGE ZP	6
16	523019	-	-	-	-	WASHER; FLAT 5/16"X5/8"X16G ZP	1
17	521633	-	-	-	-	SCREW; S/T M6X25 HEX FLANGE TAPTITE	2
18	522117	-	-	-	-	NUT; HEX STD M6 ZP	2
19	523035	-	-	-	-	WASHER; FLAT M8X22X3 HVY ZP	2
20	523034	-	-	-	-	WASHER; FLAT M8X19X1.6 ZP	10
21	521066	-	-	-	-	SCREW; M8X20 HEX ZP	6
22	521068	-	-	-	-	SCREW; M8X30 HEX ZP	6
23	522118	-	-	-	-	NUT; HEX STD M8 ZP	16

When ordering PLEASE QUOTE PART ID along with Finish Suffix (if applicable)

DOOR ASSEMBLY



When ordering PLEASE QUOTE PART ID along with Finish Suffix (if applicable)

DOOR ASSEMBLY: 993477							
Item	Part ID	Models				Title	Qty
		993902	993903	993904	993905		
1	993452	V05	E01	V05	E01	PANEL-DOOR ASSY F7000	1
2	994516	-	-	-	-	RETAINER - GLASS, COLORADO	1
3	993038	-	-	-	-	LATCH DOOR ASSY	1
4	986605	-	-	-	-	HANDLE-ASSY,W/FIRE	1
5	522401	-	-	-	-	NUT; SPIRE SNJ 0116/17/4/6	2
6	521619	-	-	-	-	SCREW; S/T 8GX1/2" PAN POZI ZP	2
7	523021	-	-	-	-	WASHER; FLAT M10X19X1.6 ZP	1
8	525001	-	-	-	-	PIN; TENSION 4X16 BLK	1
9	586161	-	-	-	-	HANDLE-DOOR WOODFIRE	1
10	521628	-	-	-	-	SCREW; S/T 8GX5/8" CSK POZI ZP	2
11	593031	-	-	-	-	GLASS W/F CLRADO, GR PROV, F7, I9	1
12	C20MMLT	-	-	-	-	TAPE ,FLT 3 X 20 LDR AD BLK X 50m ROLL	1
13	C15MMDR	-	-	-	-	DOOR ROPE	1
14*	793031	-	-	-	-	DOOR GLASS KIT	1
15*	786161	-	-	-	-	DOOR HANDLE KIT	1

*Optional Sale Kit

NOT ILLUSTRATED							
Item	Part ID	Models				Descriptions	Qty
		993902	993903	993904	993905		
1	587844	-	-	-	-	INSTRUCTION - BRICK LAYOUT	1
2	593286	-	-	-	-	OWNER MANUAL WOODFIRES 2010	1
3	593287	-	-	-	-	INSTALL MANUAL WOODFIRES 2010	1
4	593473	-	-	-	-	F7000 INSTALLATION DATA SHEET	1

SURFACE FINISH CODES FOR PANELS					
VITREOUS ENAMEL		VHT PAINT(Very High Temp)		POWDER COAT	
E01	MATT BLACK	V02	METALLIC BLACK	P02	MATT BLACK
E02	GLOSS BLACK	V03	CHARCOAL	P03	CHARCOAL
E03	CHARCOAL	V04	TITANIUM	P05	SATIN BLACK
		V05	CHARCOAL (DAM MET BLK)	P09	METTALIC BLACK
		V06	METALLIC BLACK ZINC		

When ordering PLEASE QUOTE PART ID along with Finish Suffix (if applicable)